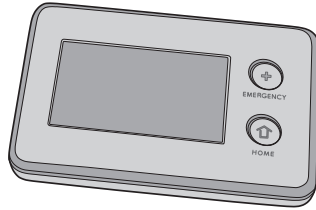


Release 1.8 and 2GIG-TS1



THE 2GIG-TS1

The new Wireless Touch Screen Keypad, 2GIG-TS1, (referred to as TS1 in this document) is unlike any other wireless keypad you have seen before. It not only offers the functionality of a system keypad but also extends all user control of the 2GIG Go!Control panel to other locations in your home. Using the TS1, you can control your lights, thermostat and door locks and see the status of every zone in your home using the exact same and familiar interface found on the Go!Control panel. The TS1 truly is an industry first in offering outstanding two-way interaction with your 2GIG security and home automation system.

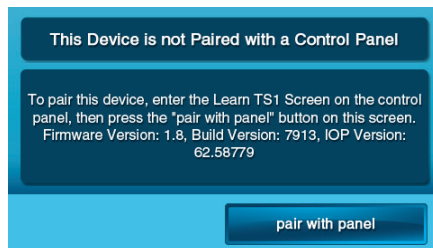
Prerequisites:

- You must have the Go!Control panel (2GIG-CP1-900, referred to in this document as CP1-900) with the 900 MHz Transceiver installed in order to use the TS1. The 900 MHz Transceiver (2GIG-XCVR2) is the communication module that incorporates a 345 MHz receiver and a 900 MHz transceiver.
- It is assumed that you have general familiarity with 2GIG's Go!Control panel programming and the software features currently included in software release 1.6. If additional information is required in these areas, please download the installation guides found on www.2gig.com.

LEARNING/PAIRING THE 2GIG-TS1

To learn or pair a TS1 with a CP1-900 panel, you must follow the steps below:

- Make sure that your CP1-900 panel is powered and operational. Use the supplied AC adapter and confirm that the adapter is connected with the correct polarity. Note that a Go!Control panel without the 900 MHz Transceiver will not communicate with the TS1.
- Make sure the TS1 has power from the supplied AC transformer. Connect the AC adapter that was supplied with the TS1 to the TS1. Confirm that the wires are connected using the correct polarity.
- The TS1 should power up and the following message should be visible on the display; **This Device is Not Paired with a Control Panel**. See example below. Follow the rest of these steps to correctly pair the TS1 with the CP1-900.



- From the CP1-900, enter the Installer Tool Box and select **System Configuration** from the CP1-900. Select the **Go To** button and enter 04 to go to question 4. The CP1-900 will display **Q4: select RF keypad # (1 to 4)**.



- Select the RF Keypad number to assign to the TS1. Use the right arrow button to select the RF Keypad number (1-4). After selecting the RF Keypad number, press the down arrow to start configuring the specific parameters for the RF Keypad you have selected.



- Mark the RF Keypad number selected as "used" by pressing the right arrow to toggle the setting on the first question or by pressing the number 1 on the keypad. Press the down arrow key to advance to the next option.



- Set RF Keypad Equipment Code to "(1059) 2GIG-TS1 wireless touchscreen keypad". By pressing the down arrow, you can select the RF Keypad Equipment Code option. When the RF Keypad Equipment Code option is selected, pressing the right or left arrow will toggle through the options. Stop when the "(1059) 2GIG-TS1 wireless touchscreen keypad" option is displayed. Press the down arrow key to advance to the next option.

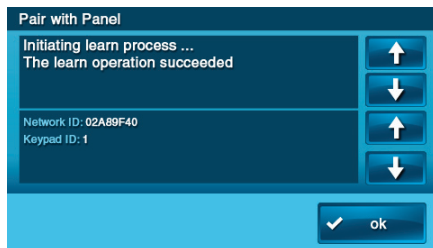


- (8) “Learn” the TS1 into the CP1-900 panel. After pressing the down arrow to select the TS1 as described in the previous step, you will see the option to “learn” or pair the TS1 to the CP1-900 panel.

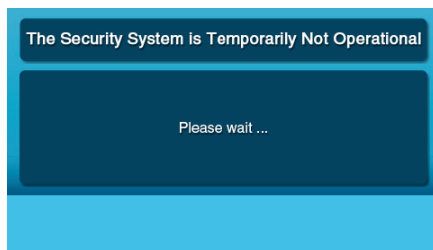


Press the “Learn” button on the CP1-900 panel and the “pair with panel” button on the TS1 to initiate the learning process. The screen will display “Pair with TS1. Initiating learning process.” Both the TS1 and CP1-900 panel will display “The learn operation succeeded” when the learning is complete.

- The CP1-900 panel will also display “Type: TS1 Wireless Keypad ID#: X” where X is the RF Keypad number configured for the TS1.
- The TS1 will display “Network ID: xxxx” where xxxx is a unique hexadecimal number and a keypad id. The hexadecimal number is a unique number associated with the CP1-900 panel you are using. The keypad id indicates the keypad you are learning into the CP1-900 panel.
- Press the OK button on both the CP1-900 and the TS1 to complete the learning process.



- (9) Press the down arrow to exit the learning menu after successfully learning the TS1. NOTE: The TS1 will display a message indicating that the security system is temporarily inoperable. The TS1 will remain in this state while the CP1-900 panel is in system configuration (programming) mode.



- Repeat the above steps to configure additional TS1s.
- Follow the subsequent configuration screens to complete system configuration as needed, except as noted below. These configuration screens are the same as those used in previous releases. Please refer to current installation documentation as needed.
- Exit the configuration by pressing the End button and saving your changes.

REMOVING A 2GIG-TS1

To remove a TS1 from a CP1-900’s panel configuration you must follow the steps below:

- From the CP1-900, enter the Installer Toolbox and select **System Configuration**. Select the **Go To** button and enter 04 to go to question 4. The CP1-900 will display **Q4: select RF keypad # (1 to 4)**. Select the configured TS1 you wish to remove and press the down arrow.
- Mark the RF Keypad number selected as “unused” by pressing the right arrow to toggle the setting on the first question. Press the down arrow key to advance to the next option. Repeat steps 10, 11 and 12 from above.
- In order to reset the TS1 to defaults so it may be used again on another panel or learned as a different keypad you must do the following;
 - Remove the power from the TS1
 - When powering up the TS1 hold both the Emergency and the Home buttons down simultaneously until they light up. When both buttons light up, the TS1 has successfully been reset to all default settings. The TS1 will display the message, **“This Device is Not Paired with a Control Panel.”**

Additional New Features Available in Software Release 1.8

Enhancements to the Installer Toolbox 1. Q-13 Modified

Select 2-way voice, now includes an option to “stay on line” to enable two-way voice during fire and CO alarms.

Q-13 Select 2-way voice (0-2)

DEFAULT: Stay on line (1)

The Control Panel supports 2-way voice communications between the subscriber and the Central Station operator over the telephone line or the GSM cellular radio (if installed) after an alarm has been reported.

- The default (1) allows 2-way audio over the telephone line or GSM radio.
- Selecting (2) allows 2-way audio over the telephone line or GSM radio during fire and CO alarms.**
- To turn off the 2-way audio feature, select disabled (0).
- When the Control Panel connects with the operator, it will beep once per second (every six seconds with a GSM connection). The beep alternates between two tones and indicates the panel is waiting for a session command. If the operator fails to issue a command within one minute (three minutes with a GSM connection), the call is terminated. Once the operator presses a command option, the beeps will stop and a 5-minute audio session will start (3-minute audio session with a GSM connection).

When 2-way voice communications have been established, the Central Station operator can use the following telephone keys to control the communications. Each time the operator uses a command key, the session is extended for five additional minutes (three minutes with a GSM connection). During the last minute of communications, the system will beep twice every 15 seconds to indicate that time is running out.

- Pressing 1 enables Talk Mode one-way communication from the CS to the Premises and allows the operator to talk.
- Pressing 2 enables VOX Mode two-way communications from the CS to the premises.
- Pressing 3 enables Listen Mode one-way communication from the premises to the CS.

- Pressing 7 extends the session five minutes without changing the mode of operation.
- Pressing 9 causes the audio session to end and terminates the call.

2. Q-30 Removed

Previously the installer could select the number of hours (0-24) as an offset for when the periodic/automatic test report would be sent. Now the periodic/automatic test report is randomized by the CP1-900 over a 24-hour period.

✓ **NOTE:** See Q-29 for information on setting the automatic test report period.

3. Q-39 Modified

If enabled (default) the random AC loss report time is now randomized over a 45-minute period, rather than a 4-hour period.

Q-39 Select random AC loss report time (0-1)

DEFAULT: Enabled (1)

This feature allows the system to report AC power loss and AC power restore at a random time of up to forty-five (45) minutes after the event occurs. This helps to reduce Central Station congestion due to a widespread power outage affecting many Control Panels at once. The random AC power status report timer is triggered based on the time set by Q-38.

- The default (1) allows random timed AC power reports.
- To turn off random timed AC power reports, select disabled (0).

4. Q-84, Q-85 and Q-86 Added

Q-84 Select services requires the master code (0-1)

DEFAULT: Disabled (0)

The Services button can be configured to require the use of the master code to access Services.

- The default (0) disables the requirement for the master code to access the Services menu.
- To require the use of the master code to access the Services menu, select enabled (1).

When enabled then the master code is required to access the Services and the Z-wave device configurations. This keeps unauthorized users from being able to change Z-wave settings, such as temperature, lights and locks.

Q-85 Select Z-Wave Toolbox menu requires the master code (0-1)

DEFAULT: Disabled (0)

The Z-Wave Toolbox menu can be set to require the use of the master code rather than the Installer code. By default, the Installer code is required for users to access the Z-Wave Toolbox.

- The default (0) disable requires the use of the Installer code to access the Toolbox menu and all of its features, including the Advanced Toolbox.
- To require the use of the master code to access the Toolbox menu, select enabled (1).

When enabled (1) the Installer code will be required to access the Advanced Toolbox menu. This prevents end users from adding or removing Z-Wave devices.

Q-86 Select disable siren after two-way audio (0-1)

DEFAULT: Disabled (0)

- The default (0) disable will cause the siren to resume after two-way audio (if bell cut off has not expired).
- Enable (1) will cause the siren to shut off after a two-way audio session.

This setting enhances system operation in PERS applications and also provides the dealer with the option of the siren sounding until the bell cut off or to the end of a two-way-voice session.

5. User Interface Enhancements

- (1) The speaker icon found to the right of the Security button on the main menu allows the user to silence all CP1-900 panel sounds. When pressing this button the user is able to silently arm or disarm the CP1-900 and any configured TS1 during the current arming or disarming process. The setting is reset after the current arming or disarming process is completed. This feature provides the ability to silently arm or disarm the system without disturbing anyone in the house.
- (2) The starburst symbol next to the Services button provides a quick and easy way to turn off the LCD screen on the CP1-900. When pressing this button on the TS1, the LCD and the LEDs around the Home and Emergency buttons will turn off. This feature is perfect for bedrooms or other areas where you may not want the excess light from the CP1-900 or TS1 to light up the room during the night. To restore the display, simple touch the LCD screen or one of the buttons on the CP1-900 or TS1.
- (3) Users are now able to arm their system when an interior zone is active. If a PIR detects a user's motion, the system will still be ready to arm enabling a user to arm their system without having to bypass the PIR's interior zone or to wait until the PIR's state is restored.

NOTE: Bypass Sensor screen does not appear for interior zones when ARMING AWAY. Any contact set as interior that is not closed will cause the system to go into alarm when the exit timer expires.

- (4) New larger icons and layout under security and menu.
- (5) New icons when arming for No Entry Delay and Silent Exit.
- (5) The words Cancel and Clear on the keypad have been replaced with icons; X for cancel and wiper blade for clear.

6. Z-Wave Features and Enhancements

- (1) The Home Services button has been changed to Services.
- (2) The Z-Wave screens for lights, thermostats and locks list the devices and no longer display their current state. To get the current state of a specific device you must select that device's button. This modification speeds up Z-Wave operation and reduces the overall network overhead, allowing for a faster and more responsive experience accessing Z-Wave devices.



Technical Support
855-2GIGTECH / 855-244-4832
www.2gig.com